

SLURRYPRO[®]

A BETTER
SLURRY PUMP
EXPERIENCE

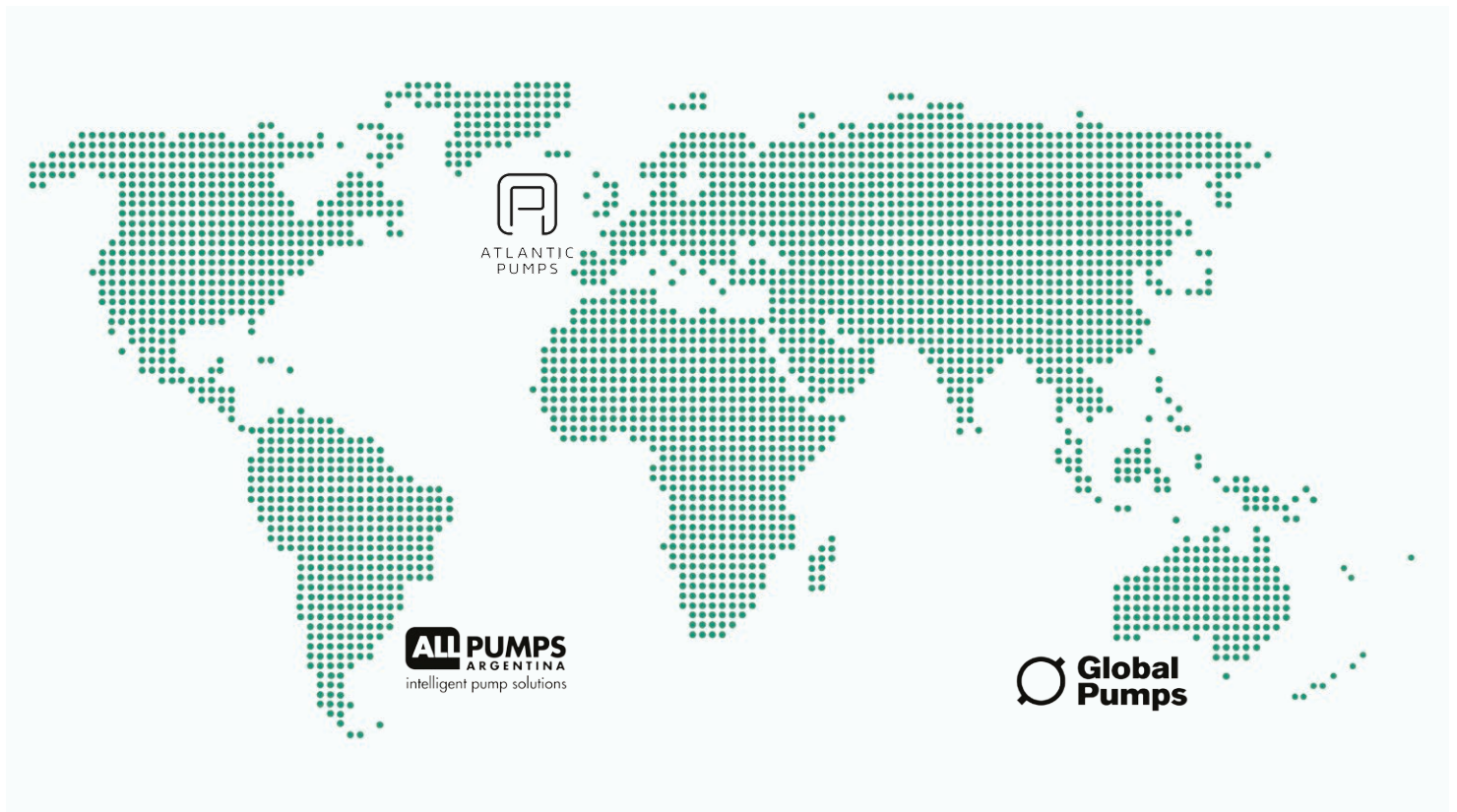




Providing pump solutions to industry, globally

Intrax is a global leader in specialist pumping equipment for difficult and challenging industrial applications. We are best known for excellence in bringing innovative and cost-saving ideas to our customers as well as offering unrivalled levels of customer service and response times.

Our combined wealth of experience and technical know-how in highly sophisticated applications has allowed us to work closely with the engineering teams on large-scale projects across the globe firmly establishing us as their trusted partner.



SLURRYPRO[®] an Intrax brand

Expertise

Intrax tackles aggressive and abrasive pumping challenges that conventional pump manufacturers shy away from. An in-depth cross organizational knowledge of aggressive fluid handling and an association with leading polymer developers and foundries globally provides a level of expertise disproportionate to the individual companies and brands.

Understanding

The Intrax companies and brands have truly evolved to relieve customer pain points and hence bring a refreshingly different approach to the rigid stance often taken by market incumbents. Intrax products have also evolved intelligently, influenced by individual customer's demands, and this progress is on-going.

Energy

Our partners often comment on the energy and motivation within our companies and how enjoyable it makes their interactions with us. We think that this is because of the ethos of our brilliant, highly-trained workforce who have been recruited to deliver cutting-edge solutions without the prejudices of a lifetime of offering conventional and often outdated technology

Innovation

A relentless drive to improve on the status quo of high value pump installations. Intrax has a culture of market disruption bringing value to customers, ranging from small, yet significant, product modifications which address regional challenges, to in-depth R&D and new product designs

A BETTER EXPERIENCE

SlurryPro originated from a firm belief that your slurry pump experience could and should be better. In response to industry feedback and frustration with service and response times, SlurryPro Pumps has introduced a customer-centric focus and revolutionized the end-user experience.

The core management team bring years of experience from the Australian and South American mining industry. This tough and unforgiving environment was the perfect birth place for a range of pumps focusing on superior wear life and reduced lifetime costs. We focus on the vital need to reduce downtime in our key markets of mining, chemicals and mineral processing.

Our range includes horizontal and vertical centrifugal slurry pumps, all designed for use in the heaviest duty applications such as mill discharge, process plant and tailings applications. They are also widely used in sand washing and recycling applications, as well as specialist areas such as difficult food washing and other abrasive processes.

We understand that reducing downtime relies on rapid and cost effective parts availability. With this in mind, we have invested heavily in stock within our distribution companies, leading to the fastest quoting and delivery times in the industry.

In short, if you're looking for a better slurry pump experience, including superior wear life, reduced lifetime cost and ease of ongoing maintenance there is quite simply no alternative to SlurryPro.

SLURRYPRO

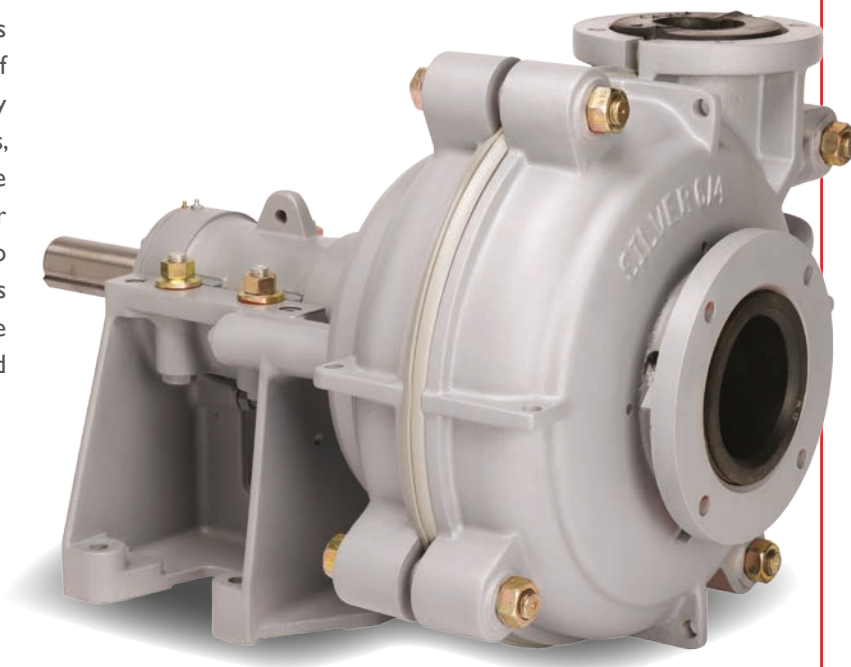
LASTS LONGER:

Proven in the Toughest
Mining Conditions Globally

Silver Series

Upgrade with interchangeable technology

The SlurryPro Silver Series is a heavy duty, proven range of horizontal and vertical slurry pumps in a wide range of sizes, available with both high chrome and different grades of rubber wearing parts. The SlurryPro Silver Series pump and spares range allows you to continue using your current pump and pipe work configuration.

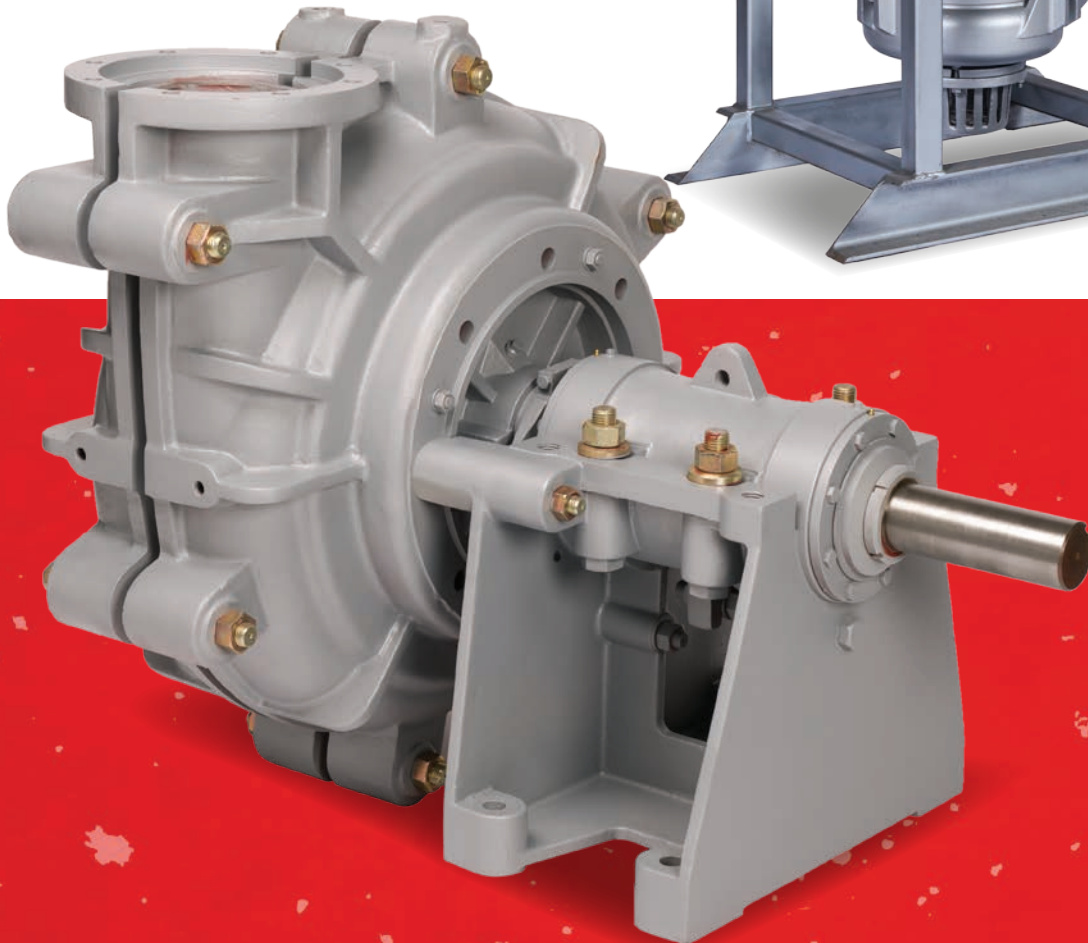


Vertical - SV Series

- This heavy duty range features a cantilever shaft design that eliminates any bearings or seals in the fluid end.
- An ideal pump for heavy slurry wash down and spill duties.
- A full range of material options including complete elastomer lined pumps and hard metal options for corrosive and abrasive media duties.
- Pumps in all sizes can be configured with a range of column lengths and impeller designs.
- They are ideal for corrosive coarse particles and high concentrations of slag pulp and are widely used in the metallurgical, mining and coal industries.

SLURRYPRO®

LASTS LONGER:
Reducing the Lifetime Cost
of your Pumps



Horizontal - SS Series

- A complete range of sizes are available across the full selection of pump types and materials.
- Components come in a range of elastomer and hard metal types and materials to suit any application, for maximum abrasion and corrosion resistance.
- The removable cartridge-type bearing assembly facilitates easy on-site maintenance procedures.
- A range of seal types are available to suit every requirement, including mechanical shaft seals to eliminate gland sealing water.

Spares & Parts

SlurryPro are committed to the production of high quality spares at fair prices. Slurry pump parts and spares are available in rubber and high chrome as well as in the unique SlurryPro PPC material which is manufactured here in the UK to incredibly high standards. These slurry pump parts are also interchangeable with spares for most other slurry pumps and we can guarantee substantial savings in almost every incidence. In addition, we work with our key clients to ensure unrivalled service levels through our unique stock management solutions. For further information enquire today.

Product Features

- A complete range of slurry pump parts and spares are available across the full selection of pump sizes.
- Components come in a range of elastomer and hard metal types and materials to suit any application, for maximum abrasion and corrosion resistance.
- Competitive pricing
- Rapid delivery times
- Unique stock solutions
- Global availability and expertise

Traceability

All parts are submitted to a rigorous quality control standard and machining of many critical parts is performed in house. All processes are logged ensuring 100% traceability from foundry to end user.

R&D and Manufacturing

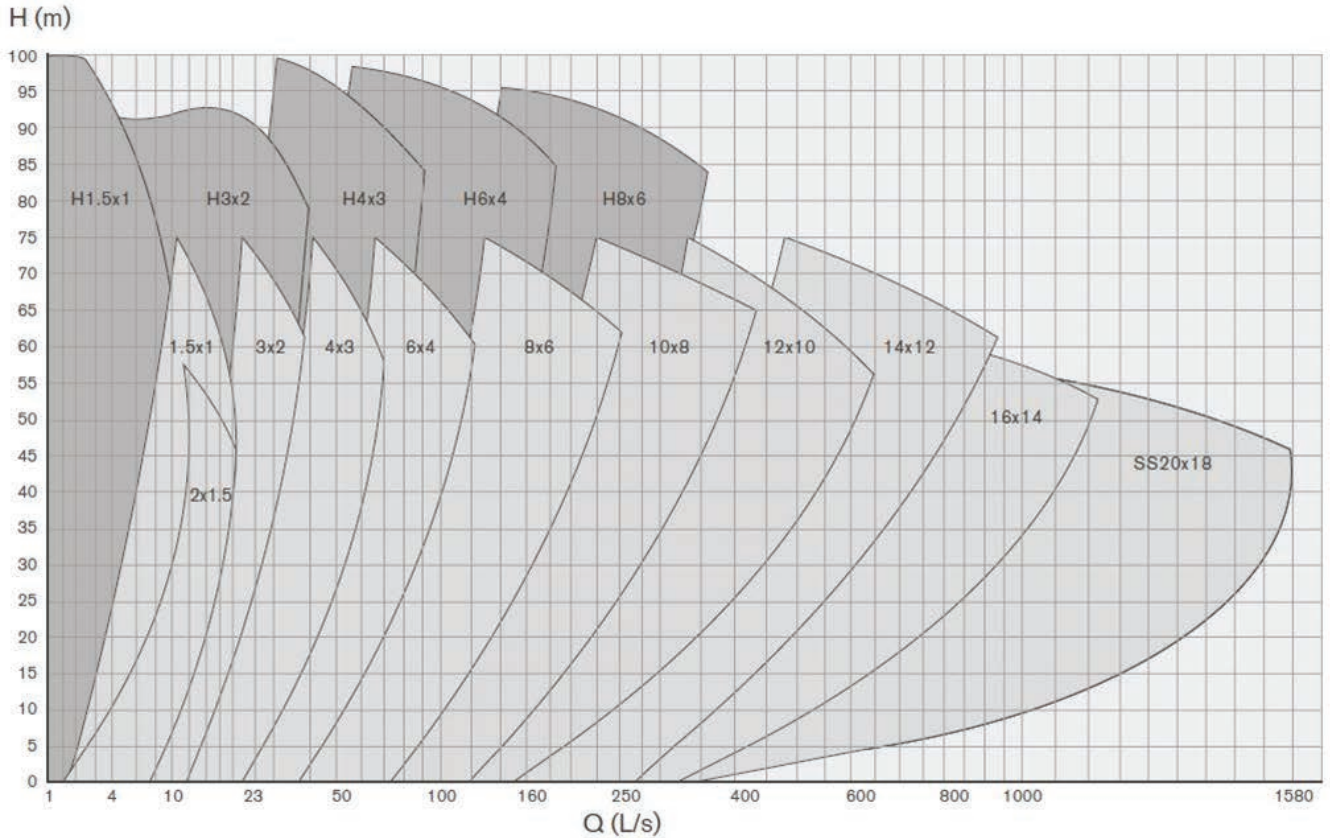
A world class LEAN manufacturing facility and the latest in CNC machining centres ensure rapid supply for both spare parts and pumps – even special configurations. Extensive experience with 3D modelling and FEA software ensure SlurryPro products keep ahead of customers demands.

SlurryPro are committed to continued product development and innovation. Current projects include a revolutionary solution to pumping problems in some of the world's toughest climates, alongside continued software developments integrating our pumps with the Internet of things.

SLURRYPRO®

PARTS LAST LONGER:
Saving you Maintenance Costs





Standard Series Horizontal Performance Curves

The selection chart should be used as a basic guide only. This chart indicates the range and quantity of flow available from pumps with standard impellers. It can also, however, be used to obtain a preliminary pump selection providing the user is able to estimate the quantity of slurry to be pumped and the developed head required.

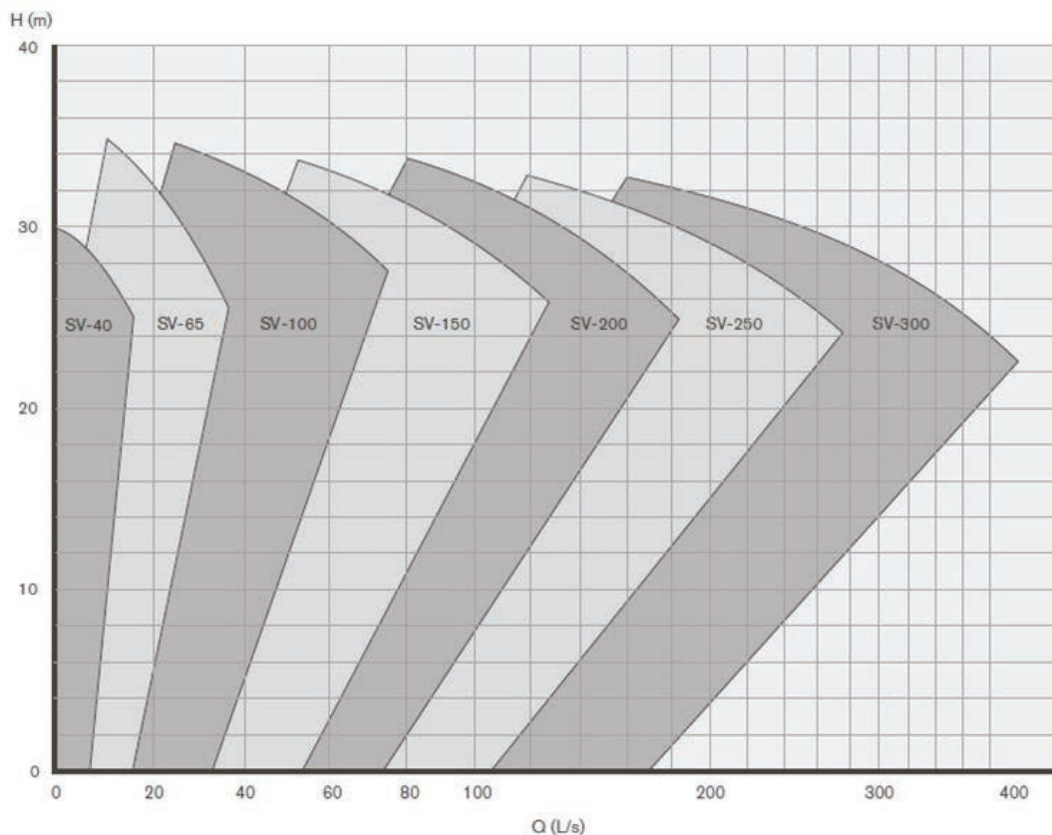
Intrax Pump Selector

Industry-leading pump selection software from Intrax. This useful tool can be used for specifying and selecting the correct SlurryPro pump for a particular application.

The Intrax Pump Selector can be used by internal staff, distributors and end users and is now available. Please ask us for further details.

SLURRYPRO®

LASTS LONGER:
Saving You Time



Vertical Series Performance Curves

The selection chart should be used as a basic guide only. This chart indicates the range and quantity of flow available from pumps with standard impellers. It can also, however, be used to obtain a preliminary pump selection providing the user is able to estimate the quantity of slurry to be pumped and the developed head required.

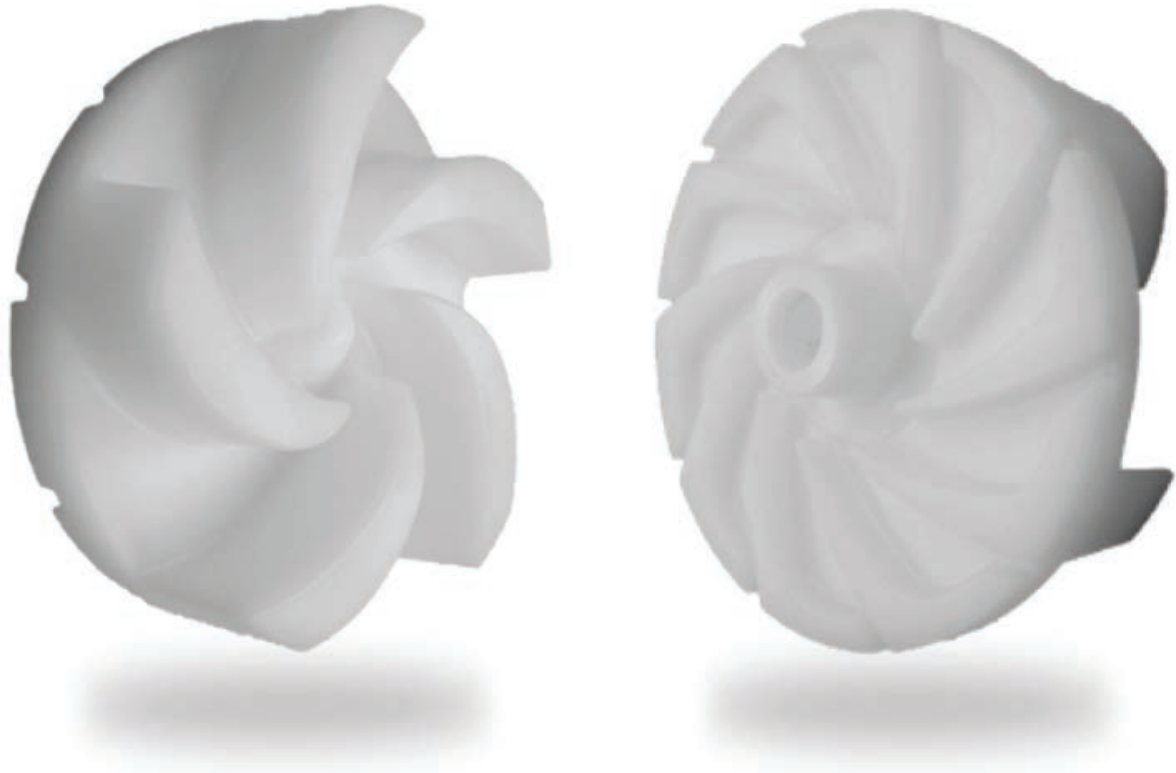
SLURRYPRO[®]

LASTS LONGER:
Downtime Costs Money

ALL SLURRYPRO PUMPS
COME WITH A

5 YEAR
WARRANTY

*100% Risk free - purchase
with total confidence!*



SlurryPro 377

SlurryPro 377 material is a high density polymeric with excellent resistance to abrasion and chemical attack. It is available as impeller and volute material in SlurryPro horizontal pumps. It provides an excellent alternative for brines, fluids with crystallization and sludge chemicals, among others. It has the same dimensions as other coating materials such as SlurryPro 360 (rubber) and SlurryPro 331 (long-lasting high chrome) so it is interchangeable without modifying the pump.

377 Key Points:

- Temperature range - 100 c to 80 c
- Excellent impact resistance
- Low friction coefficient for better pumping efficiency
- Lightweight and extremely robust
- FDA approved for contact with food
- Excellent chemical resistance (ask for specific chemicals)

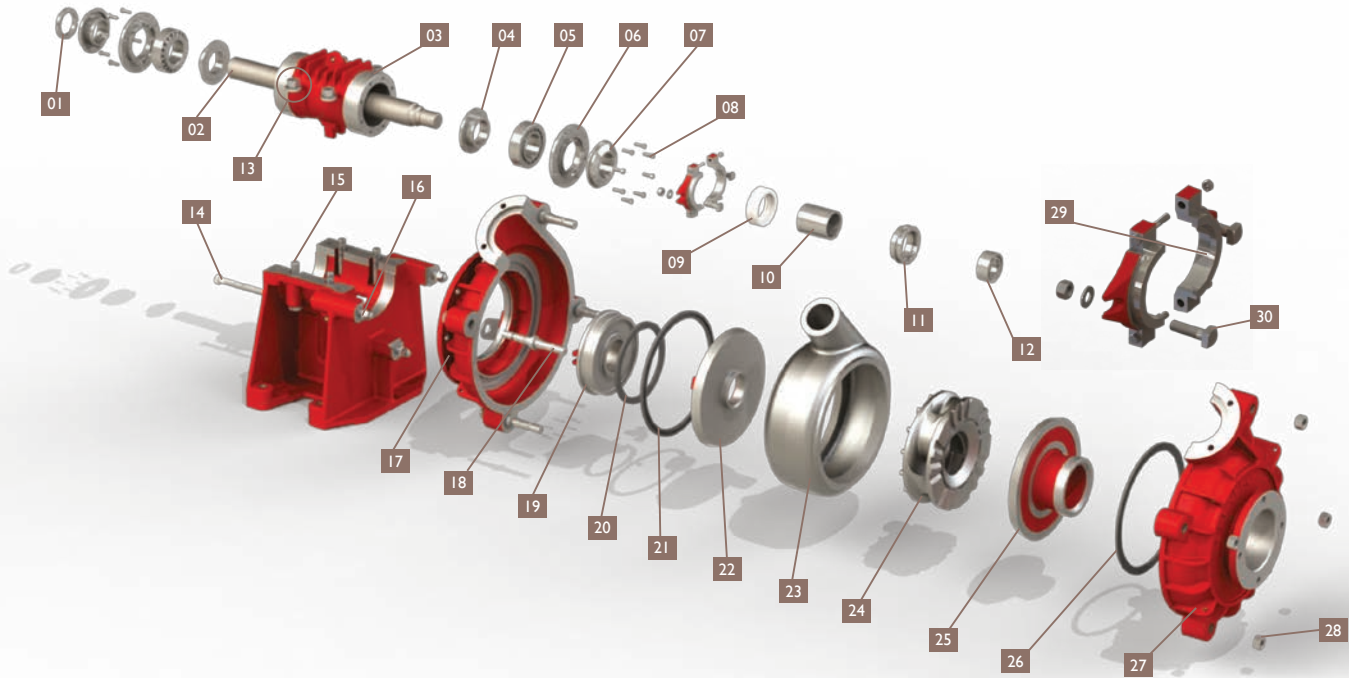
SLURRYPRO®

LASTS LONGER:
Innovative Materials and
Innovative Design

SlurryPro Cobalt Series

- A range of high-pressure slurry pumps
- Ideal for applications such as filter presses
- Offers superior performance and excellent spares availability

Slurry Pump Parts Diagram

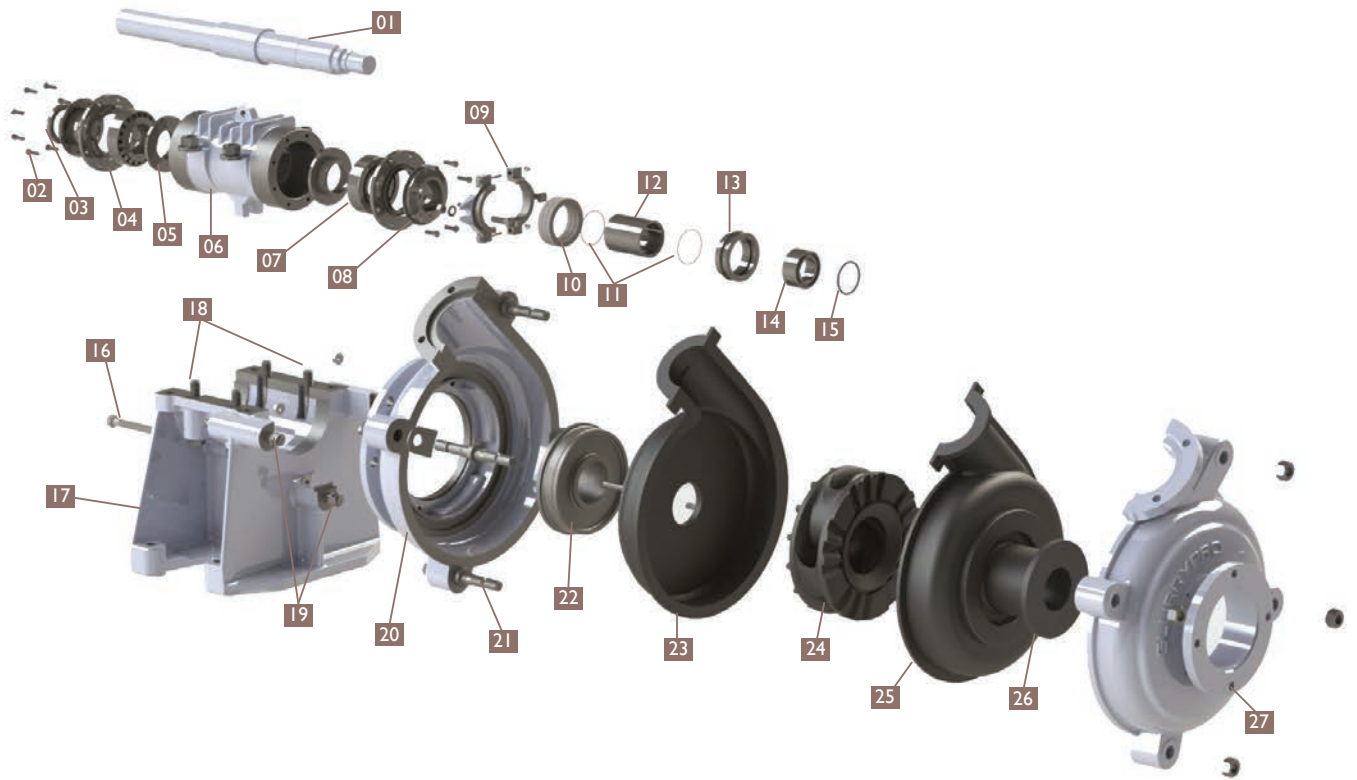


| | | | | | |
|----|---------------------|----|--------------------|----|--------------------------|
| 01 | Labyrinth Lock Nut | 11 | Lantern Restrictor | 21 | Volute Seal |
| 02 | Shaft | 12 | Shaft Spacer | 22 | Frame Plate Liner Insert |
| 03 | Bearing Housing | 13 | Clamp Washer | 23 | Volute Liner |
| 04 | Grease Retainer | 14 | Adjusting Screw | 24 | Impeller |
| 05 | Bearing | 15 | Clamp Bolt | 25 | Throatbush |
| 06 | End Cover | 16 | Frame Plate Stud | 26 | Volute Seal |
| 07 | Labyrinth | 17 | Frame Plate | 27 | Cover Plate |
| 08 | End Cover Screw Set | 18 | Cover Plate Bolt | 28 | Cover Plate Nut |
| 09 | Gland Packing | 19 | Stuffing Box | 29 | Gland Assembly |
| 10 | Shaft Sleeve | 20 | Seal | 30 | Gland Bolt |

SLURRYPRO

LASTS LONGER:
Less missed orders due
to Downtime

Rubber Parts Diagram

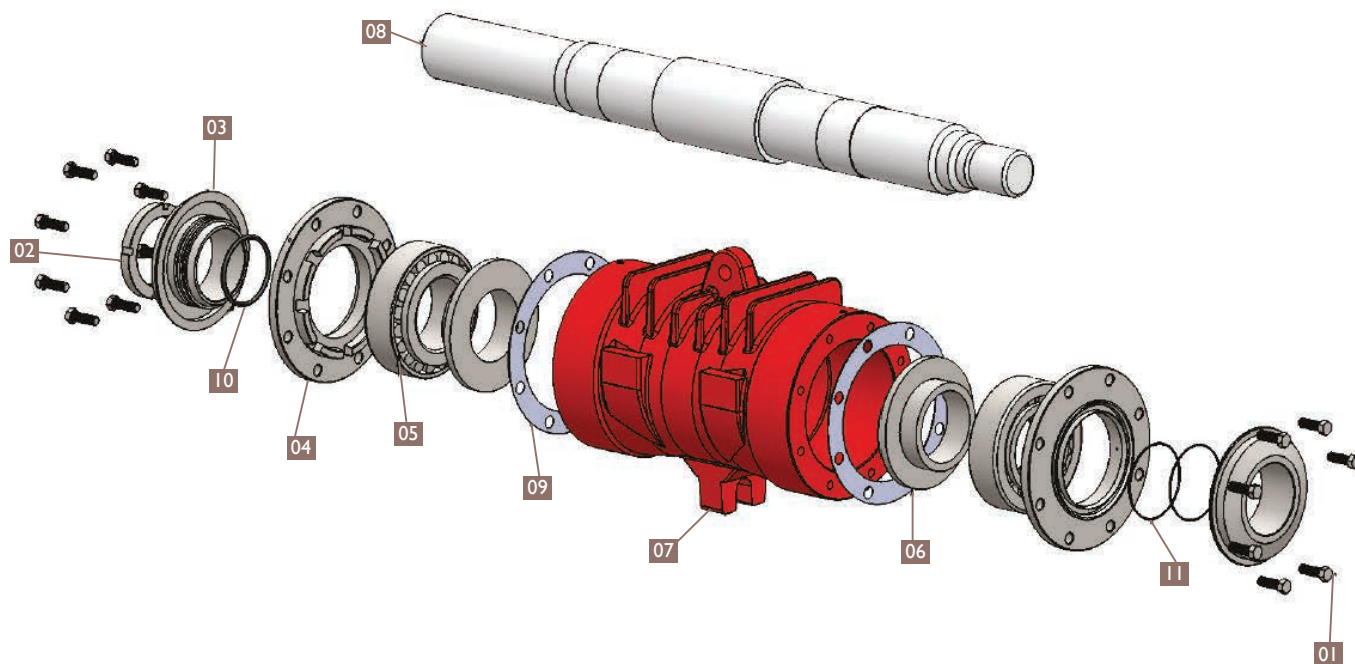


| | | |
|----------------------|------------------------|----------------------|
| 01 Shaft | 11 Shaft Sleeve O-ring | 21 Cover Plate Bolt |
| 02 End Cover Bolts | 12 Shaft Sleeve | 22 Stuffing Box |
| 03 Labyrinth Locknut | 13 Lantern Restrictor | 23 Frame Plate Liner |
| 04 End Cover | 14 Shaft Spacer | 24 Impeller |
| 05 Grease Retainer | 15 Impeller O-ring | 25 Cover Plate Liner |
| 06 Bearing Housing | 16 Adjusting Bolt | 26 Throatbush |
| 07 Bearing | 17 Base | 27 Cover Plate |
| 08 Labyrinth | 18 Clamp Bolts | |
| 09 Gland Assembly | 19 Frame Plate Stud | |
| 10 Gland Packing | 20 Frame Plate | |

SLURRYPRO®

LASTS LONGER:
Spend Less, Less Often

Bearing Assembly Blow Apart

SLURRYPRO®
LASTS LONGER:
More Time to get on with
your job


- | | |
|-------------------------------|-----------------------------|
| 01 Bolt Set - Qty: 16 | 07 Bearing Housing - Qty: 1 |
| 02 Labyrinth Locknut - Qty: 1 | 08 Shaft - Qty: 1 |
| 03 Labyrinth - Qty: 2 | 09 Shim Set - Qty: 1 Set |
| 04 End Cover - Qty: 2 | 10 Bearing Seal - Qty: 2 |
| 05 Bearing - Qty: 2 | 11 Piston Ring - Qty: 4 |
| 06 Grease Retainers - Qty: 2 | |

SlurryPro Sealing Arrangements

- Standard configuration is an expeller, which offers water savings compared to gland packing
- For more demanding situations we can fit a high-performance mechanical seal to your pumps



Diamond Series

Not Heavy Duty, **Super Duty!**

SLURRYPRO®

LASTS LONGER:
Making Your Investment
Work Harder

Over 100 years of mining industry pump experience focused on delivering a PREMIUM range of slurry pumps. The result: The SlurryPro DIAMOND Pump Series.

“Reducing downtime and maintenance costs”

Fast Response Globally

With profiled reserve stocks of components and a world class lean manufacturing system, delivery of pumps and parts, and associated engineering support is the fastest in the industry – across 4 different continents. SlurryPro has on-the-ground presence in Australia, South America, Europe, and the United States.

Innovation Today for Tomorrows Demands

Engineering design improvements ensure that SlurryPro Pumps continue running long after conventional designs have given up. Innovative design features allow the pumps to run cooler, improving operating efficiencies and greatly reduce downtime failures. A unique bearing housing design and modular “no fuss” sealing system, liner and wear part options, make for a pump that really suits your application. Attention to detail – small details that add up to make a big difference.

Focused on the Mining Industry

Proven performance in a demanding industry with support and back-up by experienced regional mining industry specialists adds local knowledge to each pump unit supplied.

Product and Part Accountability to Each and Every Customer

Quality control, including identification and traceability of components from foundry to end-user, ensure that parts consistently perform beyond industry expectations.

Special Configurations, Fast!

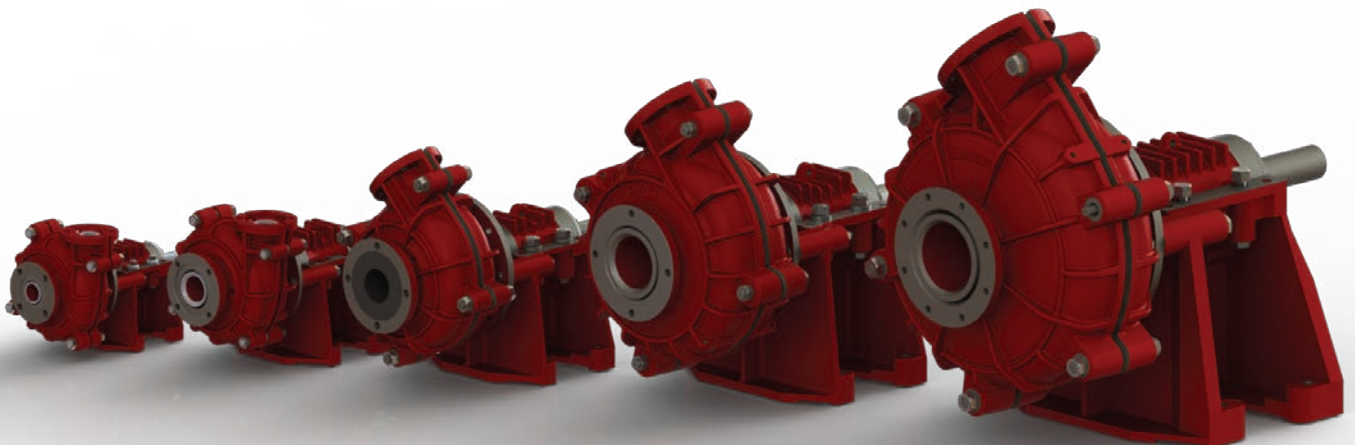
State-of-the-art manufacturing procedures make for reduced turnaround times, even for alternative pump configurations and built-up skids.

Not Just Heavy Duty, Super Duty!

Designed for the worst duties with oversized shafts and bearings, thicker casings and reinforcing ribs, SlurryPro Pumps continue to deliver even in the most arduous conditions.

Effortless Upgrade

Critical dimensions are interchangeable to other common centrifugal slurry pump designs making it easy to trade up for a SlurryPro.

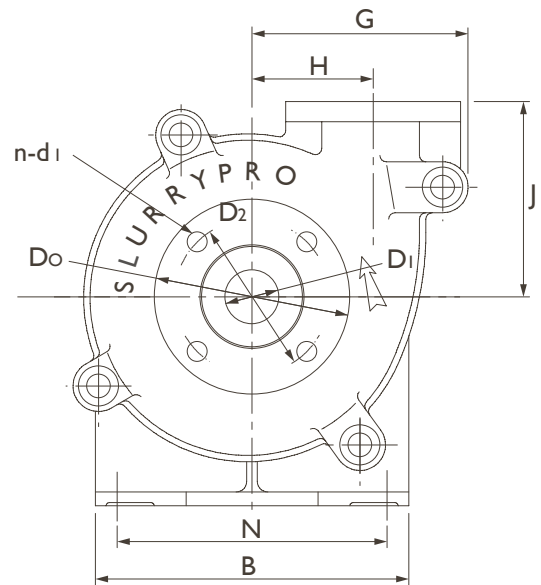
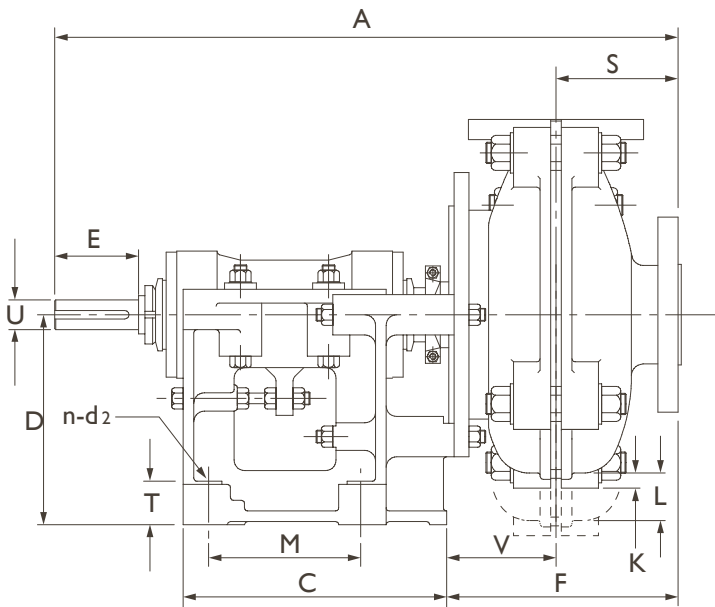
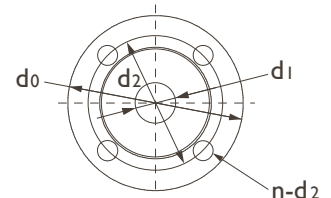


Diamond and Standard Series Horizontal

SLURRYPRO®
LASTS LONGER:
 Makes your site more Productive

TOLERANCES

Dimensional: ± 5 mm
 Between axes: ± 4 mm
 Between axes in Holes: ± 1 mm



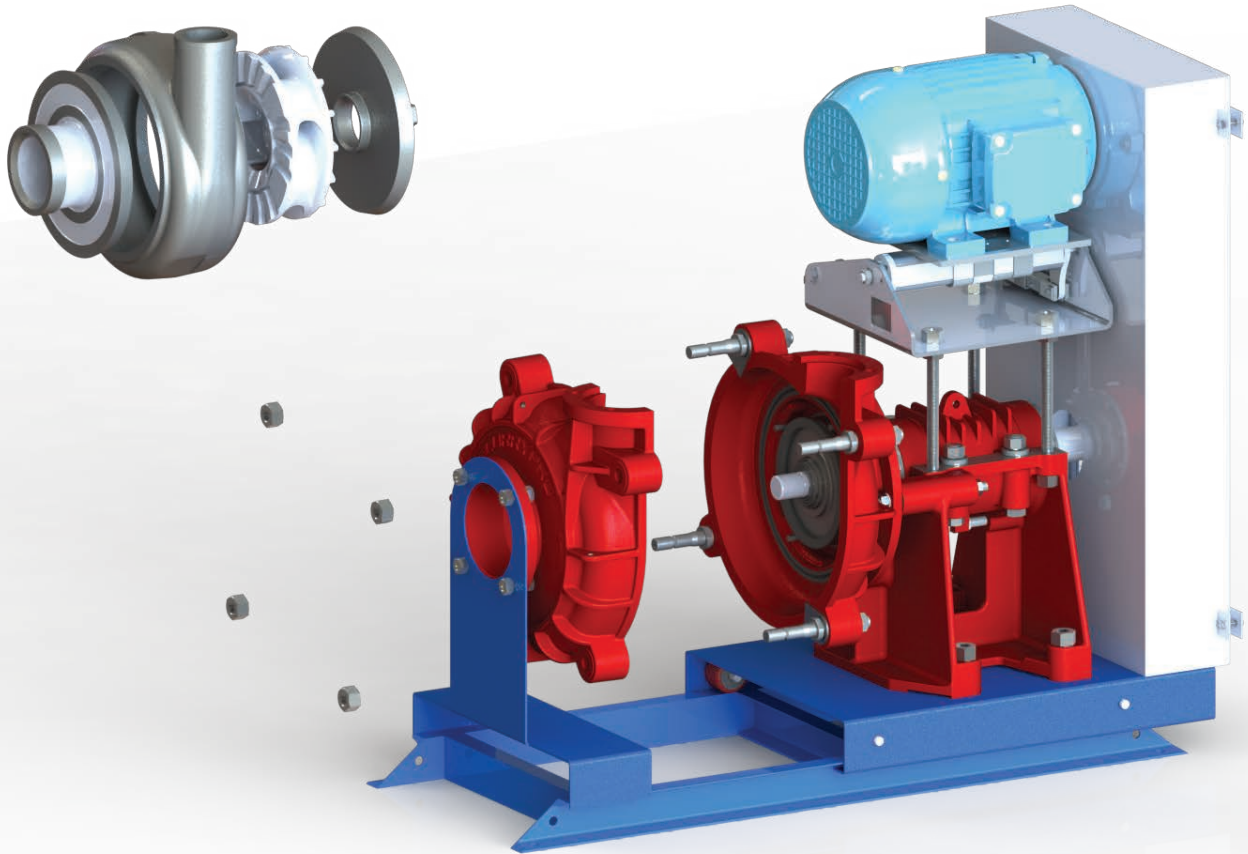
| TYPE | FRAME | A | B | C | D | U | E | F | G | H | J | K | L | M | N | V | T | S | n-d | SUCTION FLANGE | | | | DISCHARGE FLANGE | | | | PUMP WEIGHT (kg) | |
|-------|-------|------|-----|-----|-----|-----|-----|-----|-----|-----|-----|-----|----|-----|-----|-----|-----|-----|-------|----------------|----------------|----------------|------------------|------------------|----------------|----------------|------------------|------------------|--------|
| | | | | | | | | | | | | | | | | | | | | D ₀ | D ₁ | D ₂ | n-d ₁ | d ₀ | d ₁ | d ₂ | n-d ₂ | METAL | RUBBER |
| 1x1.5 | 05 | 583 | 295 | 248 | 197 | 28 | 79 | 212 | 181 | 98 | 171 | 46 | — | 143 | 254 | 181 | 38 | 106 | 4-Φ14 | 152 | 38 | 114 | 4-Φ16 | 165 | 25 | 127 | 4-Φ16 | 87 | 77 |
| 2x1.5 | 05 | 592 | 295 | 248 | 197 | 28 | 79 | 217 | 205 | 114 | 184 | 33 | — | 143 | 254 | 184 | 38 | 114 | 4-Φ19 | 152 | 38 | 114 | 4-Φ17 | 152 | 25 | 114 | 4-Φ17 | 318 | — |
| 3x2 | 10 | 768 | 406 | 311 | 254 | 42 | 121 | 280 | 238 | 138 | 210 | 71 | — | 175 | 356 | 124 | 48 | 151 | 4-Φ19 | 216 | 76 | 178 | 4-Φ19 | 184 | 51 | 146 | 4-Φ19 | 198 | 154 |
| 3x2 | 20 | 986 | 492 | 364 | 330 | 65 | 164 | 389 | 384 | 254 | 368 | — | 51 | 213 | 432 | 298 | 64 | 203 | 4-Φ22 | 216 | 76 | 178 | 8-Φ19 | 203 | 51 | 165 | 8-Φ19 | 705 | — |
| 4x3 | 10 | 843 | 406 | 311 | 254 | 42 | 121 | 350 | 292 | 149 | 262 | 24 | — | 175 | 356 | 163 | 48 | 187 | 4-Φ19 | 279 | 102 | 235 | 4-Φ22 | 229 | 76 | 191 | 4-Φ22 | 250 | 236 |
| 4x3 | 20 | 943 | 492 | 364 | 330 | 65 | 164 | 353 | 393 | 149 | 262 | 100 | — | 213 | 432 | 166 | 64 | 190 | 4-Φ22 | 279 | 102 | 235 | 4-Φ22 | 229 | 76 | 191 | 4-Φ22 | 318 | 290 |
| 6x4 | 30 | 1178 | 622 | 448 | 457 | 80 | 222 | 433 | 412 | 230 | 338 | 138 | — | 257 | 341 | 251 | 76 | 219 | 4-Φ29 | 337 | 152 | 292 | 4-Φ22 | 279 | 102 | 235 | 4-Φ22 | 886 | 635 |
| 6x4 | 20 | 1021 | 492 | 364 | 330 | 65 | 164 | 421 | 406 | 229 | 328 | 11 | — | 213 | 432 | 200 | 64 | 219 | 4-Φ35 | 337 | 152 | 292 | 8-Φ22 | 305 | 102 | 260 | 8-Φ22 | 288 | — |
| 8x6 | 30 | 1302 | 622 | 448 | 457 | 80 | 222 | 557 | 551 | 318 | 460 | — | 62 | 257 | 544 | 265 | 76 | 292 | 4-Φ29 | 406 | 203 | 356 | 8-Φ22 | 368 | 152 | 324 | 8-Φ21 | 1500 | 984 |
| 8x6 | 45 | 1507 | 857 | 635 | 610 | 100 | 279 | 539 | 551 | 318 | 460 | 90 | — | 346 | 760 | 247 | 100 | 292 | 4-Φ29 | 406 | 203 | 356 | 8-Φ22 | 368 | 152 | 324 | 8-Φ21 | 1818 | 1393 |
| 10x8 | 30 | 1337 | 662 | 448 | 457 | 80 | 222 | 585 | 568 | 368 | 470 | — | 82 | 257 | 546 | — | 76 | 325 | 4-Φ48 | 502 | 254 | 445 | 8-Φ29 | 432 | 203 | 375 | 8-Φ29 | 3200 | 2586 |
| 12x10 | 45 | 1546 | 851 | 635 | 610 | 100 | 279 | ? | 700 | 435 | 470 | — | — | 350 | 761 | ?? | ?? | 324 | 4-Φ?? | ??? | ??? | ??? | 8-Φ?? | ?? | ??? | ??? | 8-Φ?? | ???? | ???? |

*All dimensions (mm)
 **Dimensions subject to change without notice

Self-Tightening Motorbase

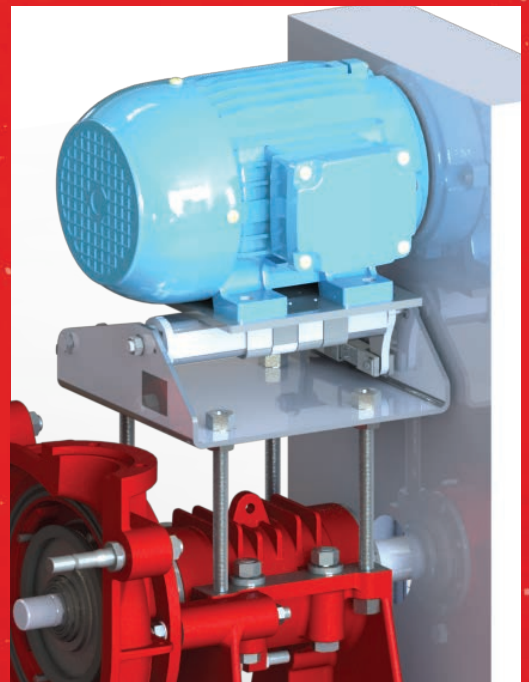
SLURRYPRO®

LASTS LONGER:
Pumps with Less Hassle



SlurryPro pumps can also be fitted with a self-tightening motorbase. Here we detail some of the advantages.

- Ability to withstand shocks without the pulley snapping
- Automatically increases tension on the pulley, eliminating slack
- Much easier to remove the pulley for servicing or inspection
- Due to a consistent tension being maintained, this avoids heat being generated by the belt slipping, therefore avoiding belt failure
- Due to maintenance of ideal belt tension, less energy is consumed and the belt can last up to three times as long





CASE STUDY: **Sliding Base**

BACKGROUND

Harsco Metals & Minerals provide logistics and resource recovery services for the steel industry, operating at more than 160 customer locations across 30 countries.

A visit to their Scunthorpe site by Atlantic Pumps' Sales Manager, Nathan Rowles revealed that their existing slurry pump was not only difficult to maintain but they were being overcharged for slurry pump parts and being quoted longer than acceptable lead times.

SOLUTION

It was decided that the client would be best served by a 3x2 Silver Series horizontal, centrifugal slurry pump from SlurryPro featuring a different seal arrangement to the one on their current pump.

Given the limited space available at the site, the pump would be built upon a bespoke sliding base. This would enable the client to undertake easier inspection and maintenance of the slurry pump and reduce repair time - thus keeping any future downtime to a minimum.

In addition to a new slurry pump, Harsco Metals will also benefit from Atlantic Pumps large stock of SlurryPro parts - all available for next day delivery from our Sheffield-based premises.



CASE STUDY: Cymru Industrial Supplies Ltd (for Tata Steel)

BACKGROUND

Cymru Industrial Supplies Ltd are one of the pump suppliers to Tata Steel at Port Talbot. Tata is Europe's second largest steel producer, with steelmaking in the UK and Netherlands, and manufacturing plants across Europe. When a pump failed on the Port Talbot site at the start of November, Cymru contacted the original pump manufacturer who quoted a lead time of ten weeks. Cymru needed to source a replacement pump that day and have it operational quickly, to avoid costly issues (calculated at over £200,000) related to the pumping of dirty slurry in the manufacturing process.

SOLUTION

Cymru Industrial Supplies found Atlantic Pumps online. They had seen from our website that we stocked new and re-furbished pumps; a conversation with our sales team led them to become interested in - and go on to purchase - a new SlurryPro 4x3 slurry pump. The SlurryPro 4x3 is a horizontal centrifugal slurry pump designed for highly abrasive applications. The pump features an oversize shaft and bearing for zero shaft deflection plus 'run cool' bearing house for longer bearing lubrication life.

The order was placed in the morning and the pump was delivered to the Port Talbot site the very same day from our large, well-stocked Sheffield warehouse. The pump arrived on time at 2 o'clock and was being installed by 3 o'clock. Cymru Industrial Supplies were very satisfied with Atlantic's involvement and have since gone on to purchase a backup SlurryPro 4x3 from us. This wasn't the first time Atlantic Pumps have been called upon to supply a suitable pump to a site at very short notice; it's something our knowledgeable, trained staff handle comfortably on a regular basis.

When downtime can cost into the tens of thousands of pounds an hour and, as we've seen here, fines can potentially cost hundreds of thousands of pounds, having a supplier who stocks and supplies pumps and parts on very short lead times is a necessity to all. This, combined with our ability to supply quotes within the hour and our desire to help clients save money are just some of the reasons many are now turning to Atlantic Pumps as their chosen pump supplier.



CASE STUDY: Minera de Órgiva

Minera de Órgiva is the current operator of the mining concession “Lújar No. 30,411” located in the town of Orgiva, Granada. It extracts fluorite (trade name fluorspar), which is considered a priority raw material mineral according to the Royal Decree 647/2002.

Minera de Órgiva are an existing client of Atlantic Pumps and contacted them regarding the availability of nine slurry pumps. Quick delivery and price were key for the operator who had also contacted two other companies with regards to supplying the pumps. Atlantic Pumps put Minera de Órgiva in touch with their European partners, Cramix. The Spanish-based distributor then worked with Minera de Órgiva to ascertain the clients exact requirements before relaying this information back to Atlantic in the UK with it being decided that the operator would be best served by nine SlurryPro 2x1.5” pumps.

Atlantic’s large onsite stocks meant that the pumps were available for immediate dispatch. This availability coupled with their rapid delivery time once again set them apart from their rivals with Minera de Órgiva choosing to place their order with Atlantic Pumps.

The operator took delivery of the nine SlurryPro 2x1.5” pumps within a couple of days - a time which other suppliers couldn’t get near.

Installation of the pumps was undertaken by engineers at Minera de Órgiva and at the time of writing there have been no problems with any of the nine pumps.

“ We are really pleased to see the established global SlurryPro brand developing in new markets, and our growing network of distributors are allowing us to combine the same quality and service associated with SlurryPro with on-the-ground presence in an increasing number of countries.

Bill Noakes, Marketing Manager, Atlantic Pumps

Cramix are one of several companies to have signed an agreement with Atlantic Pumps to distribute SlurryPro and Audex pumps along with Gromatex hosing in Europe. For details of your regional European distributor contact Atlantic Pumps on +44 (0)114 229 3144 or email info@atlanticpumps.co.uk



CASE STUDY: LCC Belfast

LCC Ltd is a leading solid fuel importer and distributor based in Ireland, handling and delivering domestic and industrial coal at all levels of the supply chain. The company whose headquarters are based in Cookstown has become a nationwide retailer and distributor of domestic and industrial solid fuels sourced both from the indigenous industry and from abroad.

LCC Belfast is a dry screening processing facility which opened in 1997 in the Port of Belfast, Northern Ireland. The facility is in operation 24 hours a day, 7 days a week. The facility is approximately 18 acres and handles all types of solid fuels including Coal, Met Coke, Pet Coke and Anthracite. The raw materials are imported by sea and exported from the weighbridge facility by road or again by sea-freight.

LCC Ltd have recently begun using an impressive new coal washing and sorting plant at the dock which was built by County Tyrone based company, Dernaseer - a global, leading manufacturer of sand washing systems, with installations worldwide.

Dernaseer have a good working relationship with Atlantic Pumps. In the past they had experienced pump suppliers who were taking a longer than acceptable time to supply quotes and deliver goods. Atlantic's knowledgeable staff and revolutionary

“ If a customer spends in excess of £1m on a wash plant, maximising uptime is the most important thing to them

Nathan Rowles, Atlantic Pumps Sales Manager

approach to rapid customer service saw Dernaseer receive quotes within the hour – a service Atlantic are proud of and something they offer to all.

Dernaseer incorporated a number of SlurryPro Silver Series heavy duty centrifugal slurry pumps in and around the impressive site. Supplied by Atlantic Pumps, the installed pumps include the SlurryPro 3x2, 4x3, 6x4 and vertical pumps.

SlurryPro pumps are quickly becoming the go-to choice for many mine and quarry operators and are designed for the continuous pumping of highly abrasive, high-density slurries with minimal maintenance required. Atlantic Pumps hold large stocks of pumps and parts available for next day delivery ensuring downtime is minimised.

Talking about the inclusion of the SlurryPro pumps at LCC Belfast, Atlantic Pumps Sales Manager, Nathan Rowles said; “We know that customers are looking for top quality products backed up by a great service. If a customer spends in excess of £1m on a wash plant, maximising uptime is the most important thing to them. Increased wear life and revolutionary fast lead times as provided by Atlantic Pumps means that the customers can keep the pumps running every minute of the day; we believe that's what LCC Group and Dernaseer will prove.”



SLURRYPRO[®]

In your market, SlurryPro are distributed by our partners Atlantic Pumps.
For further details please contact:



**ATLANTIC
PUMPS**

t: 0800 118 2500
f: 0114 269 1499
w: atlanticpumps.co.uk
e: info@atlanticpumps.co.uk

11 Orgreave Close, Dore House Industrial Estate,
Sheffield, South Yorkshire, S13 9NP, UK